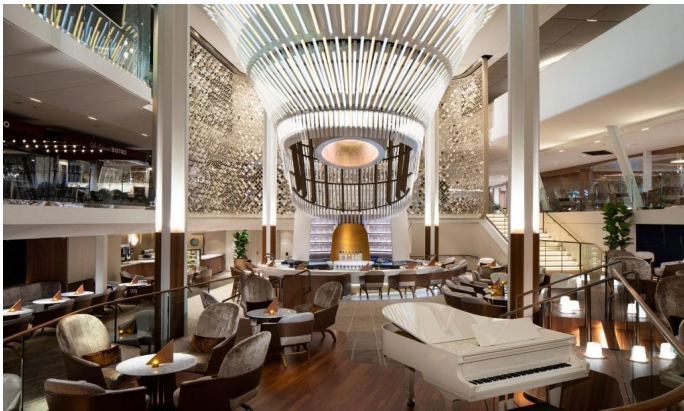




Postcard Jar 7-Night Alaska Dawes Glacier May 24-31, 2024



John Walker & Ken Hinkle

Dream Makers
Hargarther, Thaler & Associates

John: 404-836-0934 | j.walker@dreamvacations.com

Ken: 404-836-0461 | k.hinkle@dreamvacations.com

Cruises + Luxury Resorts + Land Packages + Hotels

ITINERARY - MAY 2024

****ITINERARY IS SUBJECT TO CHANGE****

Friday, May 24	Seattle, Washington	Board ship at noon
Saturday, May 25	CRUISING	
Sunday, May 26	Ketchikan, Alaska	7 AM - 4 PM
Monday, May 27	Cruising Endicott Arm	
Monday, May 27	Juneau, Alaska	1:30 PM - 10:00 PM
Tuesday, May 28	Skagway, Alaska	7AM - 6 PM
Tuesday, May 28	Alaska Inside Passage - Cruising	
Wednesday, May 29	CRUISING	
Thursday, May 30	Victoria, British Columbia	5:30 PM - 11:59 PM
Friday, May 31	Seattle, Washington	Arrival 7 a.m.



Join Ann & Steve Jeget
(along with other friends of Postcard Jar)



CABINS AND RATES

All cabin rates INCLUDE:

- ❖ Unlimited Meals
- ❖ Classic Beverage Package (Beer, Wine, Cocktails and Soft Drinks)
- ❖ Pre-Paid Tips for All Staff
- ❖ Free Basic Wifi
- ❖ Port Fees and Taxes
- ❖ Exclusive Events

Prices subject to change until confirmed with deposit.

For The Retreat, solo, or additional guest pricing, email [John Walker](#) for a quote.

THE RETREAT

Email [John Walker](#) for pricing and availability.

As a guest of The Retreat, you'll enjoy a roomier suite, and a long list of thoughtfully curated amenities and perks. Includes premium wifi, premium drinks, tips, and onboard credit. You'll also have exclusive access to Luminae restaurant, butler service, Retreat concierge services, complimentary access to The Retreat lounge and private sun deck.



Sky Suites

319 sq.ft.
veranda 79 sq.ft.

The perfectly designed Sky Suite offers a blend of expansive views and intimate luxury. These large suites feature a king-sized bed from our signature Cashmere Mattress and a spacious, private veranda. The split bathroom features a large spa tub with shower.

[VIEW SKY SUITES](#)

PRIME AQUA CLASS CABIN

Double occupancy (total for 2 people in stateroom) = \$5,713

Includes exclusive access to Blu restaurant, complimentary access to the Sea Thermal Suite, and spa concierge service.

AquaClass On Edge Series

Edge AquaClass guests enjoy a state-of-the-art infinite veranda, king-size Cashmere mattress bedding, soothing stateroom touches and complimentary fitness classes. Plus, unlimited access to the SEA Thermal Suite, complimentary dining at Blu restaurant, and a personal spa concierge.

Total living space 243 sq. ft.

Veranda 42 sq. ft.



PRIME CONCIERGE CLASS CABIN

Double occupancy (total for 2 people in stateroom) = \$5,333

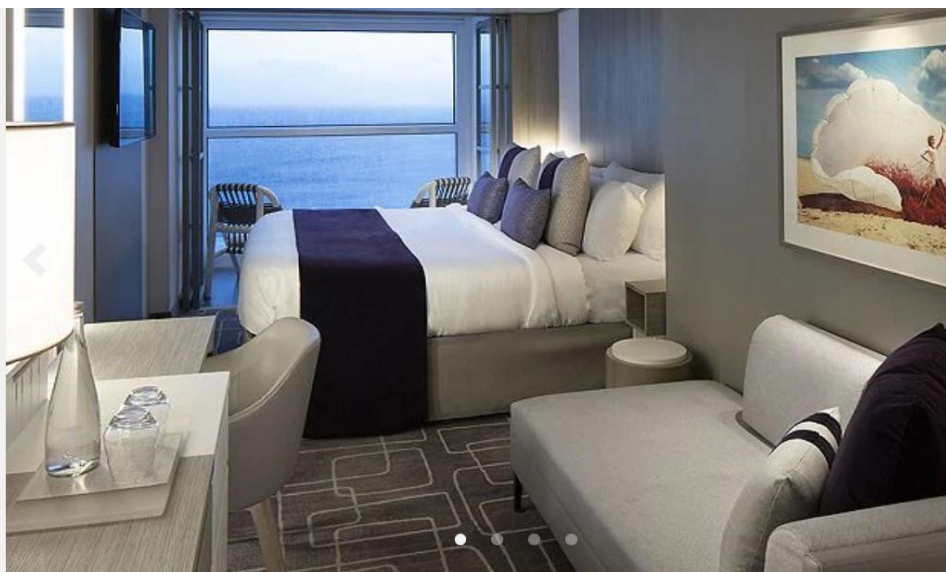
Concierge Class

Total living space 243 sq. ft.

Veranda 42 Sq. ft.

Discover a stateroom where service makes all the difference. It's the little things that make a big difference, such as an exclusive lunch, a destination seminar and dedicated service throughout your journey.

[VIEW CONCIERGE CLASS](#)



PANORAMIC OCEAN VIEW CABIN

Double occupancy (total for 2 people in stateroom) = \$5,133

Panoramic Ocean View Stateroom

Enjoy ever-changing vistas through floor-to-ceiling windows, plus more space than our standard Ocean View Stateroom. Panoramic Ocean View Staterooms are ideal for families and travelers looking to relax in unique luxury. They're conveniently located forward and mid-ship and furnished for pure indulgence.

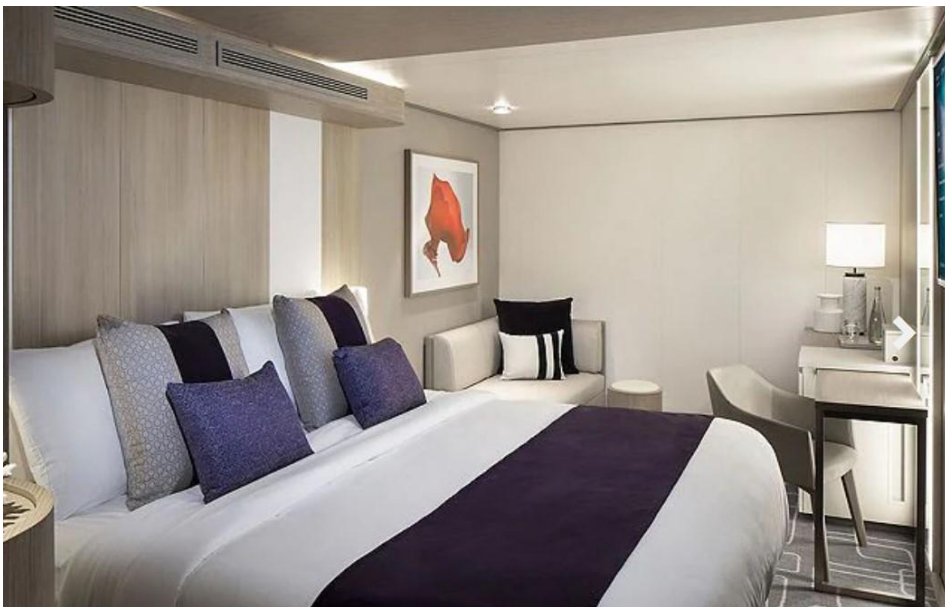
212 sq. ft.

Please note: Panoramic Ocean View Staterooms do not feature the Infinite Veranda®.



DELUXE INTERIOR CABIN

Double occupancy (total for 2 people in stateroom) = \$3,333



Deluxe Inside Stateroom

With ample living space, bigger bathrooms, and more drawer space, Deluxe Inside Staterooms will become your home away from home while on board. Relax at sea after a day that's as busy or laid back as you wish.

202 sq. ft.

FREQUENTLY ASKED QUESTIONS

Q: How do I sign up?

A: It's easy! Just complete the Dream Vacations passenger information form. Use this link: [POSTCARD JAR CRUISE FORM](#). Important: You MUST BOOK ONLY through this link (and not directly through the cruise line or another agent) to be included in Postcard Jar Friends Cruise pricing, meetups, & activities.

Q: Is there a secure online payment option?

A: Yes. You can make a secure payment anytime you'd like with Dream Vacations' secure payment form. Use this link anytime to make payments: [DREAM VACATIONS SECURE ONLINE PAYMENT FORM](#)

Q: Is this a private charter cruise?

A: No. It is an "everybody - all are welcome" cruise. We just reserved a block of rooms at discounted pricing for friends of Postcard Jar and anyone else who would like to join us.

Q: What if I've never cruised before?

A: That's no problem at all. In fact, that's what we're here for. We will have several Zoom video conferences before our cruise to help guide you and answer all of your questions and concerns.

Q: Will there be private Postcard Jar events?

A: Yes, there will be events exclusive to our group. Also, we will have a designated area in the dining room each night for those who'd like to gather together with Ann and Steve as well as the Friends of Postcard Jar group.

Q: Are drinks included?

A: The **Classic Drink Package** is included in your cruise fare. It includes soft drinks, beers, spirits, cocktails, liqueurs, frozen drinks, wines by the glass, specialty coffee, tea, and generic water up to \$9 per serving. Martini Bar not included. If you'd like a drink that exceeds the \$9 limit, you just pay the difference, or you can also upgrade to the Premium Drink Package onboard for an additional fee.

Q: Do I need a passport?

A: Yes. Every passenger needs a passport to board the ship. In addition, your passport must not expire before December 2024.

IMPORTANT Celebrity Cruises and Dream Vacations Terms and Conditions

- Prices are **subject to change** until confirmed with your deposit with a credit or debit card.
- Refundable \$500 per cabin deposit due at time of booking.
- ALL PAYMENTS are **non-refundable** after January 24, 2024
- Non-refundable group service fee of \$25 per person will be charged in addition to the cabin rates listed at the time of booking.